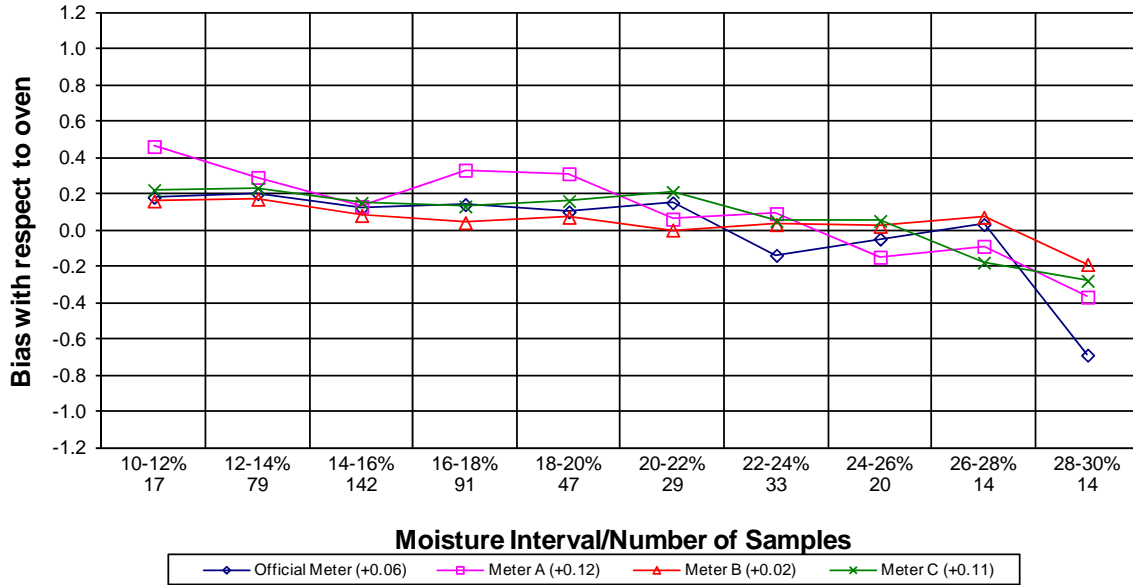
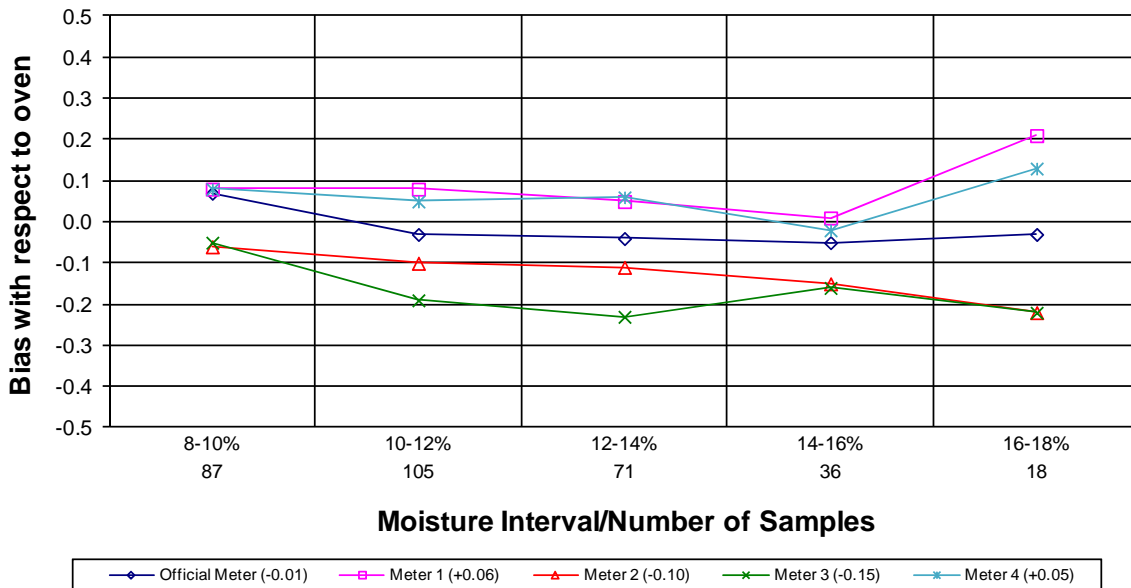


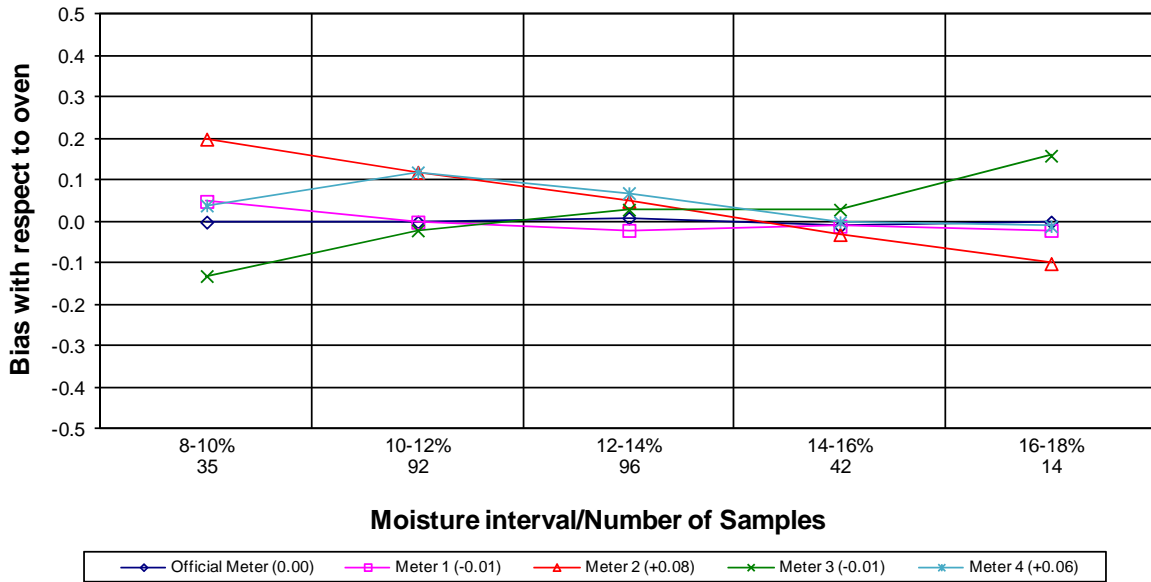
Moisture Meter Comparison - Corn 2010 - 2012 Crop Years



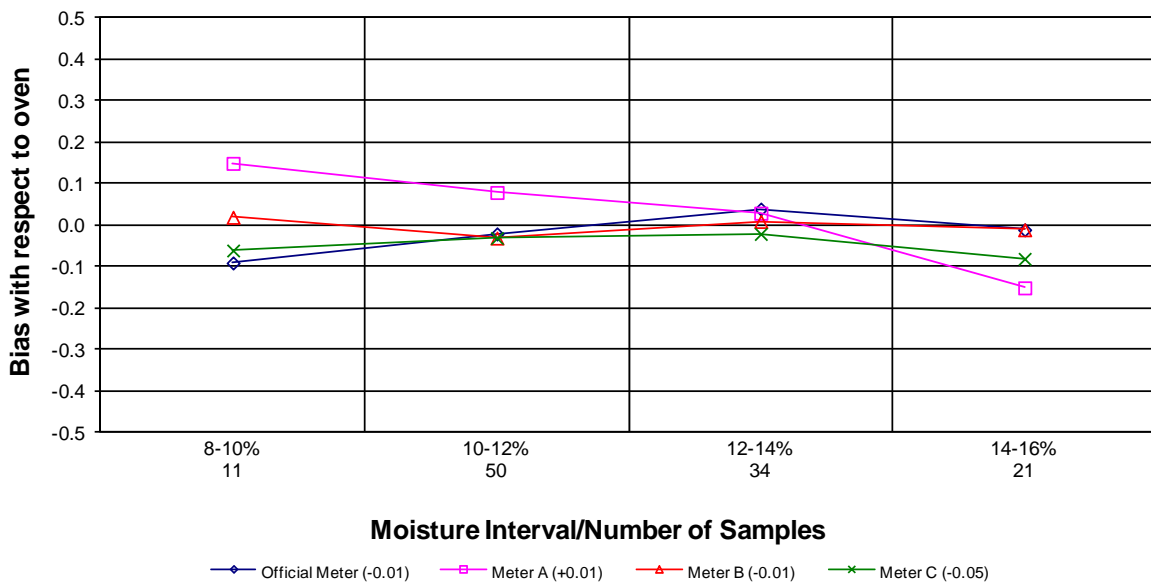
Moisture Meter Comparison - Soybeans 2010 - 2012 Crop Years



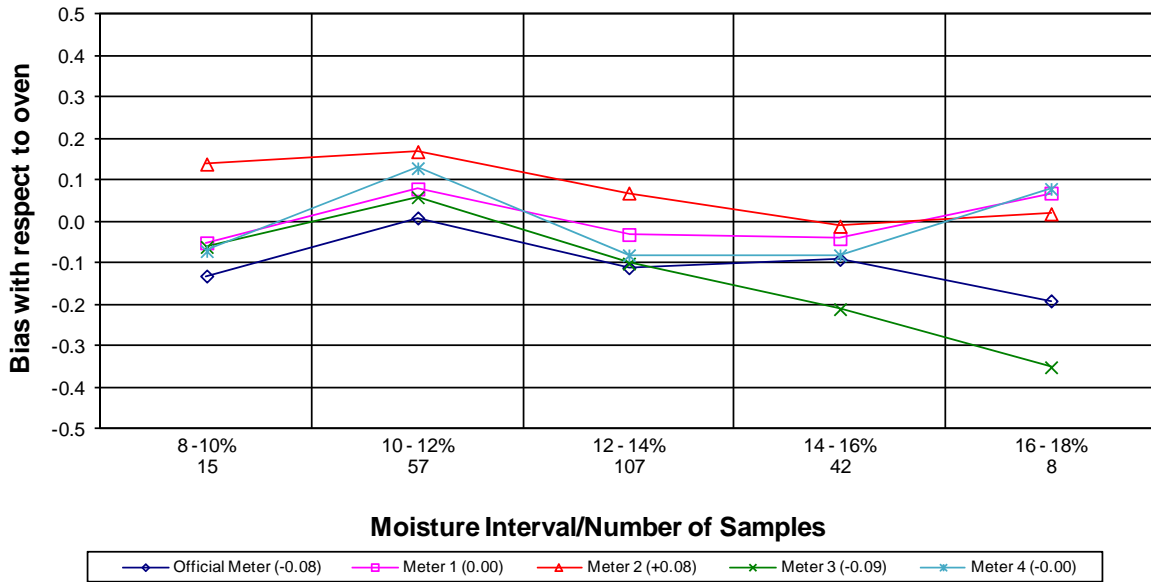
Moisture Meter Comparison - Hard Red Winter Wheat 2010 - 2012 Crop Years



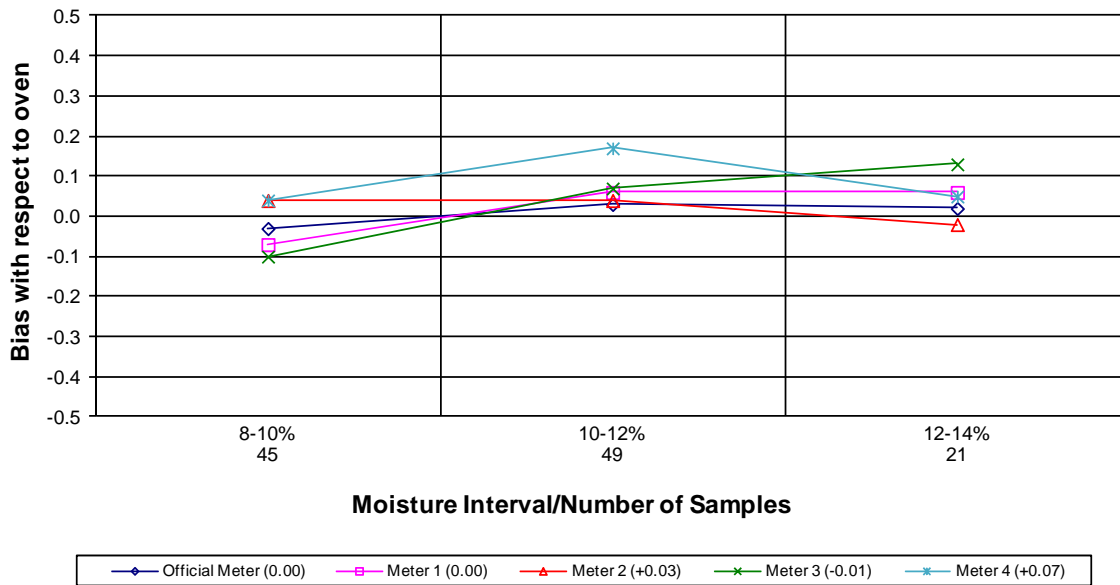
Moisture Meter Comparison - Durum 2010 - 2012 Crop Years



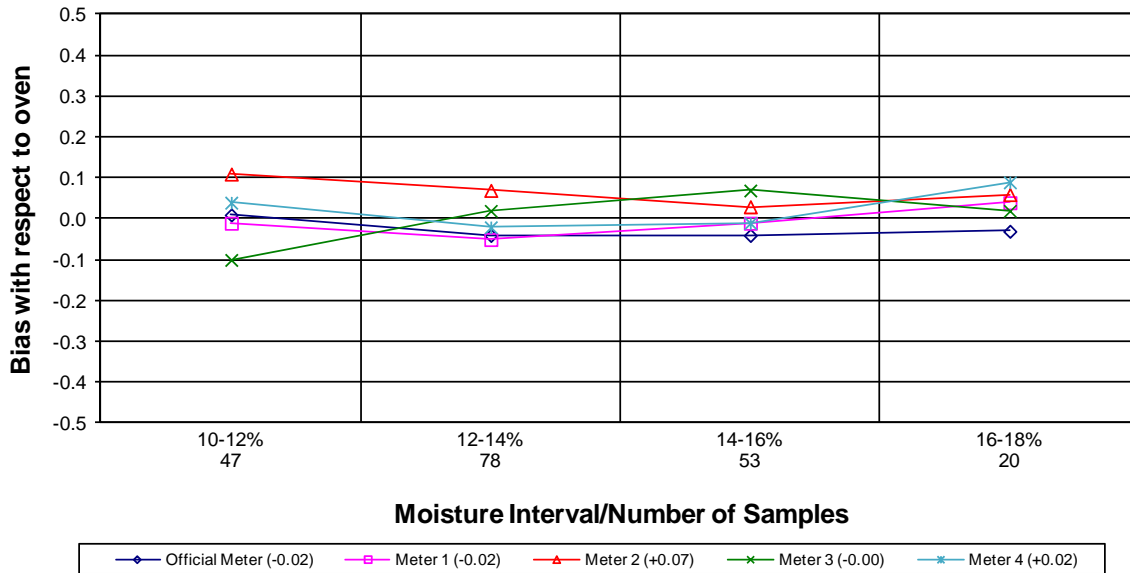
Moisture Meter Comparison - Hard Red Spring Wheat 2010 - 2012 Crop Years



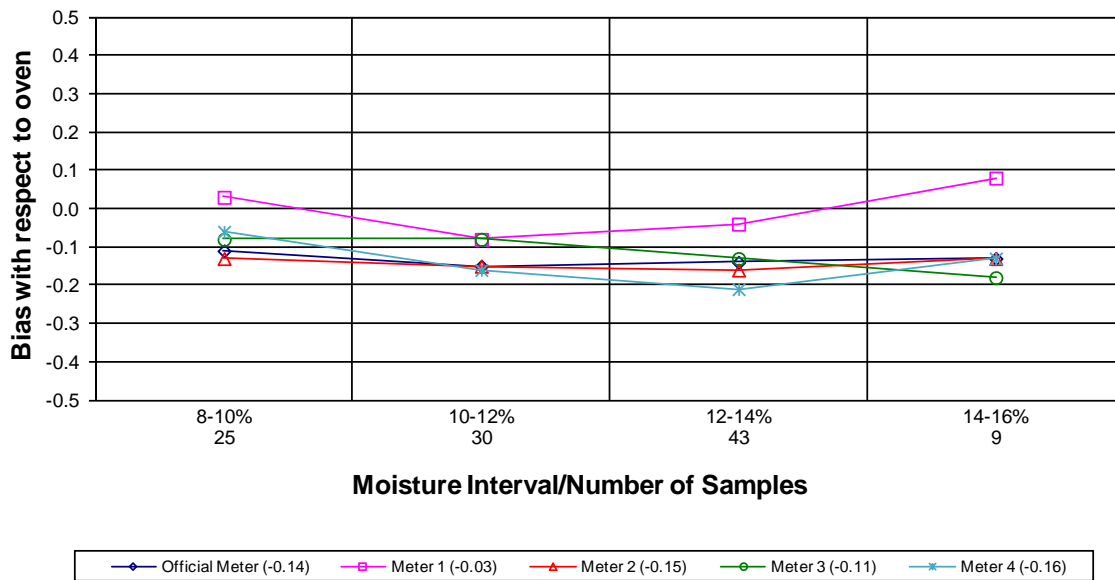
Moisture Meter Comparison - Hard White Wheat 2010 - 2012 Crop Years



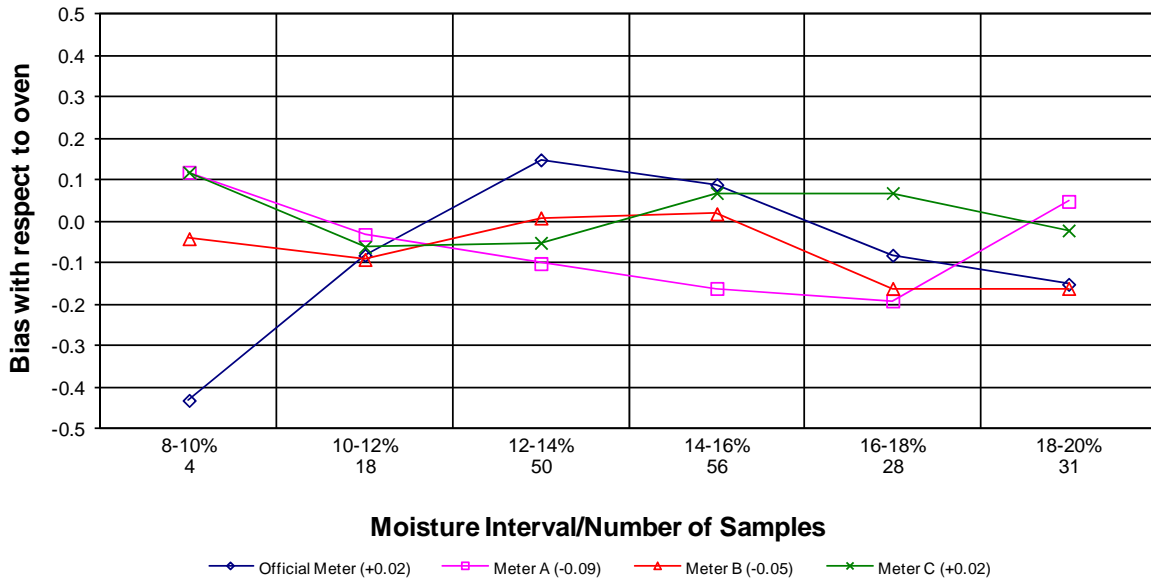
Moisture Meter Comparison - Soft Red Winter Wheat 2010 - 2012 Crop Years



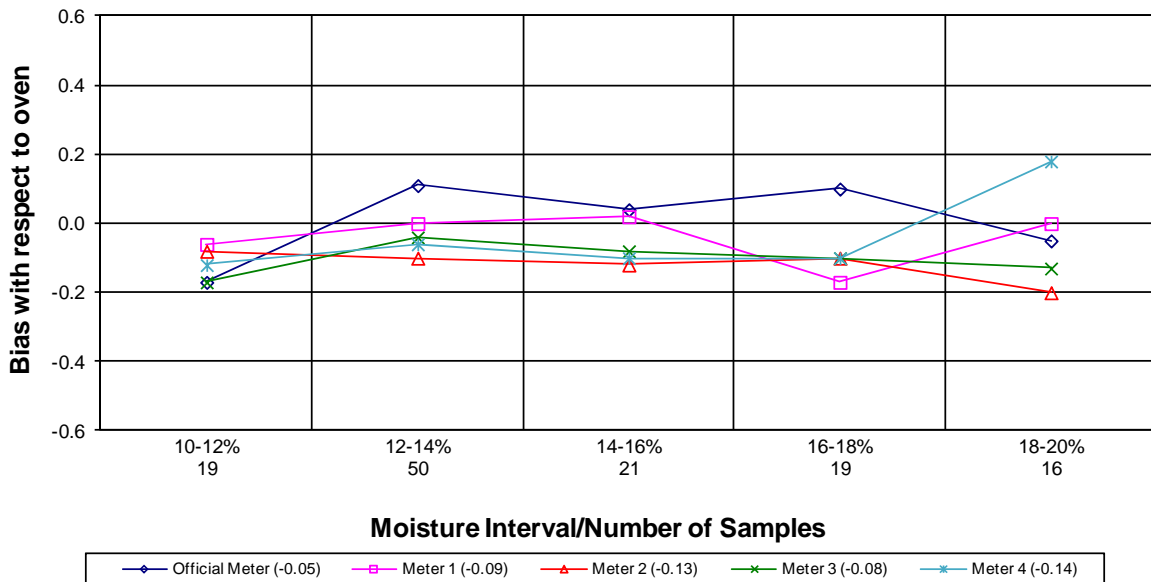
Moisture Meter Comparison - Soft White Wheat 2010 - 2012 Crop Years



Moisture Meter Comparison - Long Grain Rough Rice 2010 - 2012 Crop Years

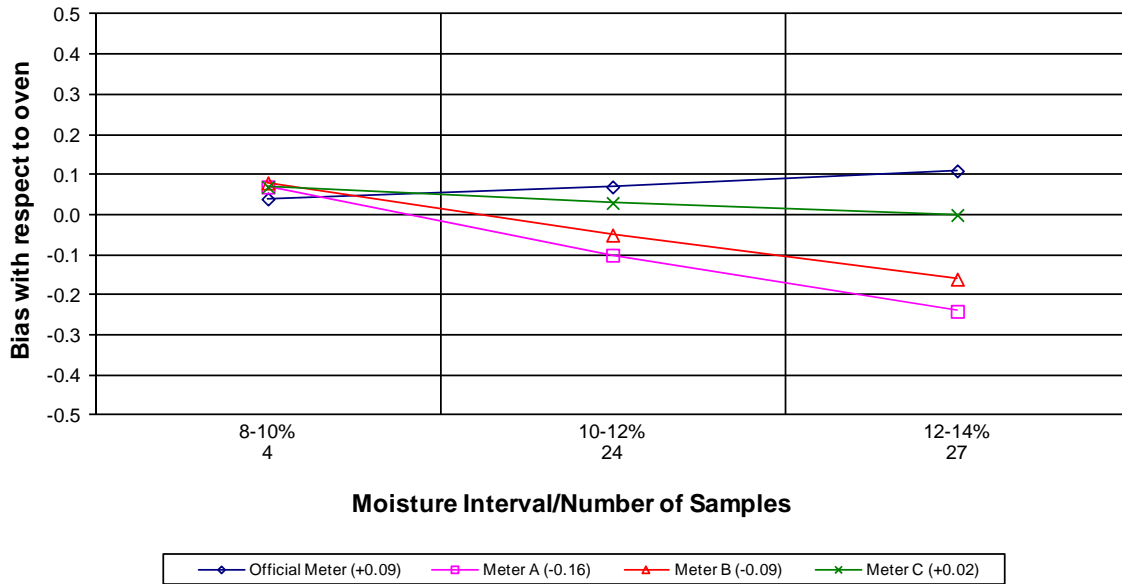


Moisture Meter Comparison - Medium Grain Rough Rice 2010 - 2012 Crop Years



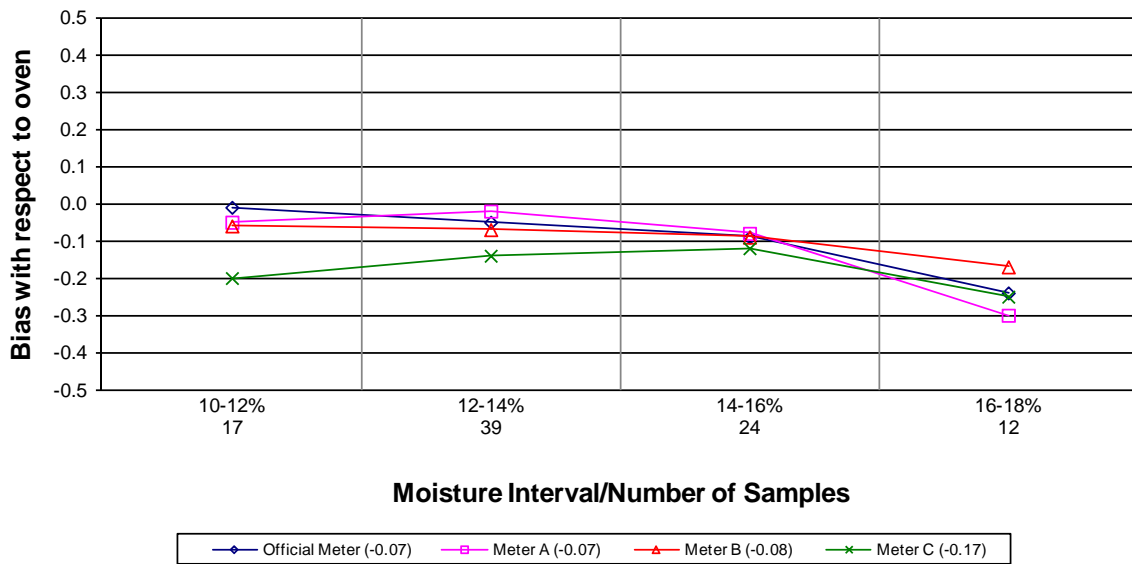
Moisture Meter Comparison - Oats

2010 - 2012 Crop Years

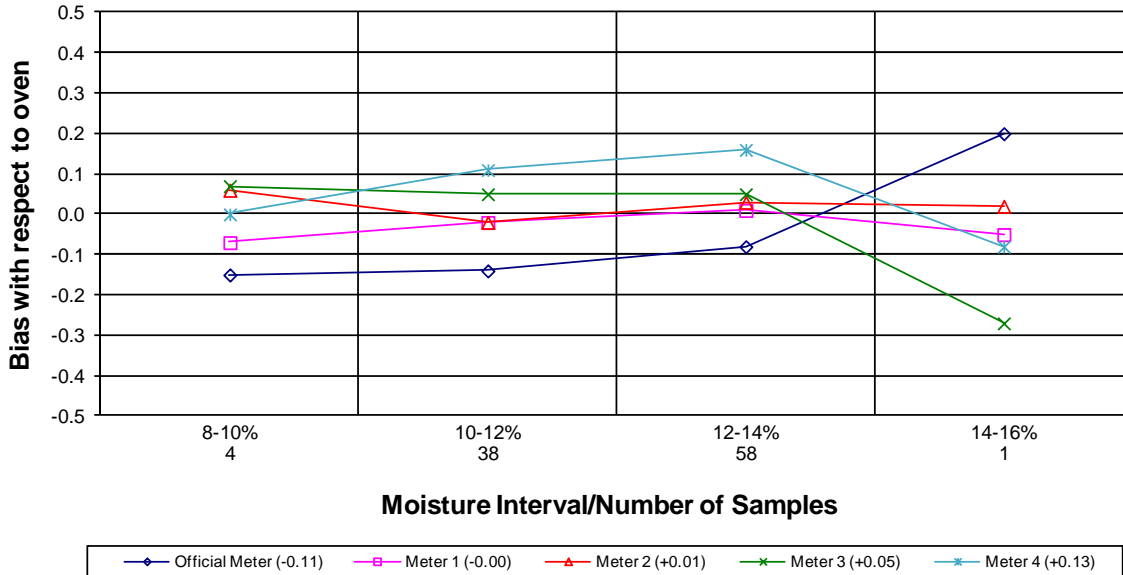


Moisture Meter Comparison - Grain Sorghum

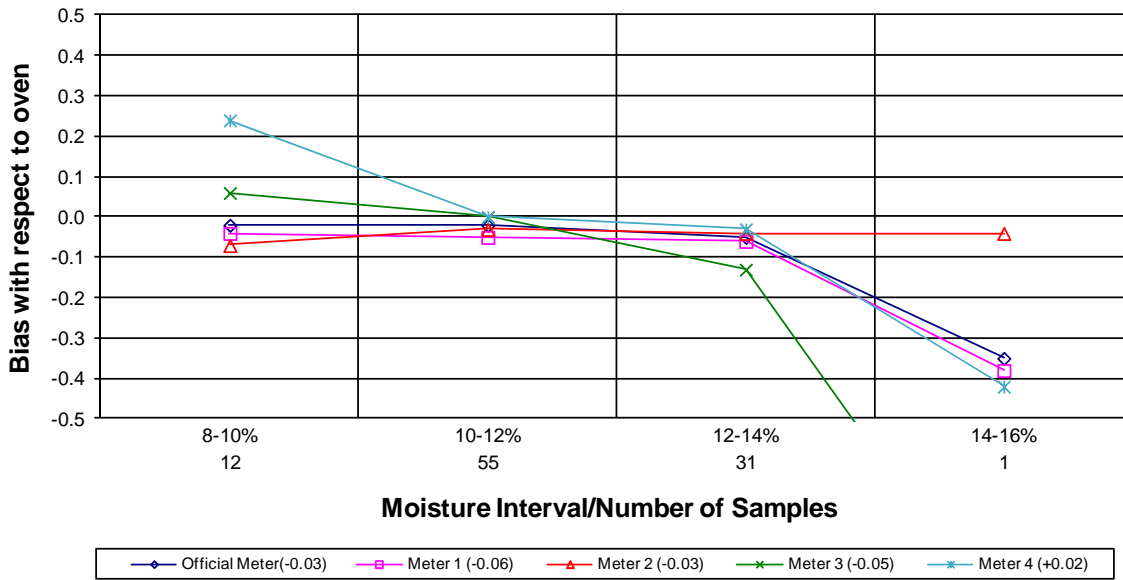
2010 - 2012 Crop Years



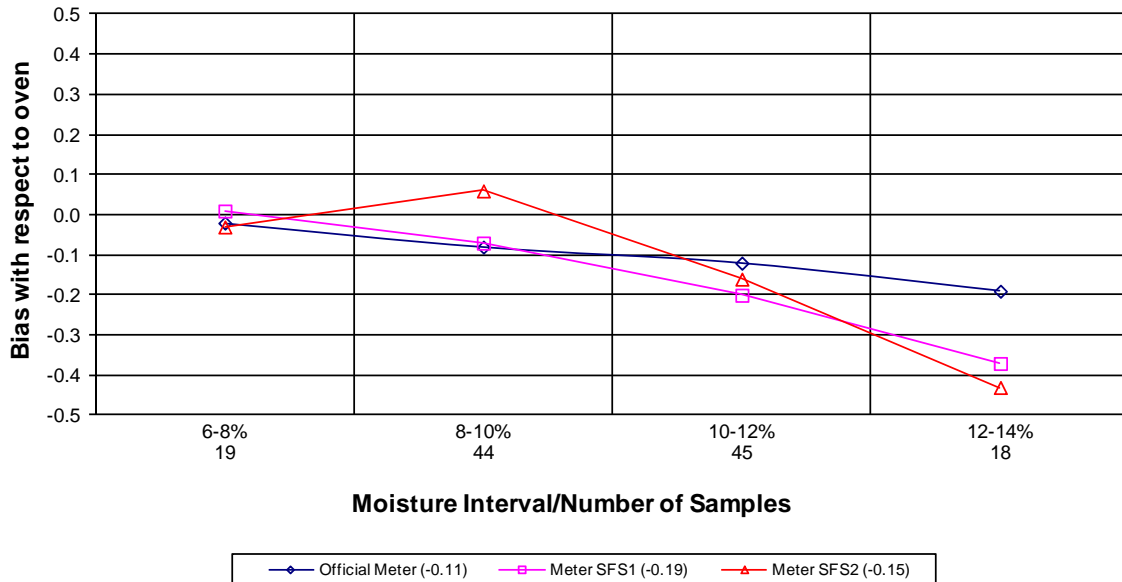
Moisture Meter Comparison - Six Row Barley 2010 - 2012 Crop Years



Moisture Meter Comparison -Two Row Barley 2010 - 2012 Crop Years



Moisture Meter Comparison - Sunflower Seed 2010 - 2012 Crop Years



On May 1, 2013, the USDA GIPSA official moisture meter for all fifteen NTEP grains switched to the Unified Grain Moisture Algorithm (UGMA) technology. The Official Meter designation in the above comparison charts is for the UGMA master system which has three years worth of data. The UGMA models approved by GIPSA for official certification of grain moisture do not have three years worth of data.