



OrgPublisher Hotspots

Table of Contents

Hotspots	3
Inserting Hotspots	3
Testing the Hotspot	5
Setting a Global Hotspot	6
Smart Links	7
Using Smart Links	7

Hotspots

The OrgPublisher hotspot feature creates clickable links inside and org chart. Hotspots typically link to another web page, usually with an htm file extension. You can use hotspots to link to any file type that your web browser recognizes and displays.

- Hotspots can be created for box titles, job titles, position types, and custom fields.
- Hotspot data is passed in Field 20 or higher
- OrgPublisher stores a base URL for each hotspot field in the template file (.otm).
- Hotspots are active when displayed in the Profile View.

Inserting Hotspots

1. Verify that the data source contains the required hotspot information. Determine which custom fields will be assigned hotspots.
2. Open the data source chart in OrgPublisher and select **Data** from the main menu then **Custom field properties** from the options list. The *Custom Field Properties* dialog opens.
3. Locate the first field containing hotspot data and type your descriptive name in the **Field label** column.
4. Tab to the **Type** column field and use the drop-down arrow to select **Hotspot**.

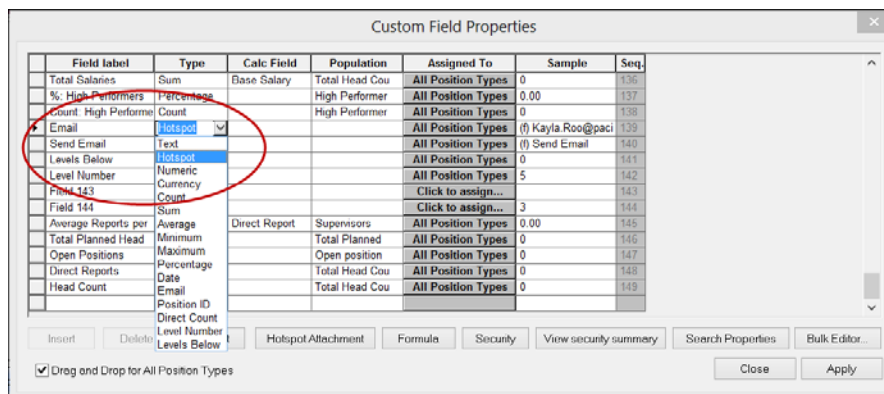


Figure 1.

5. Click **Hotspot Attachment** at the bottom of the dialog.

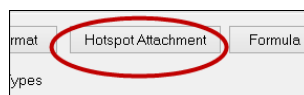


Figure 2.

The *Attach Hotspot* dialog opens.

Copyright 2015, PeopleFluent. All rights reserved. Proprietary and confidential. PeopleFluent and the PeopleFluent and OrgPublisher logos are trademarks or registered trademarks of PeopleFluent. All other brand and product names are trademarks or registered trademarks of their respective holders.

- Click the drop-down arrow in the **Select field to attach hotspot** field to choose the field you want to launch the hotspot link.

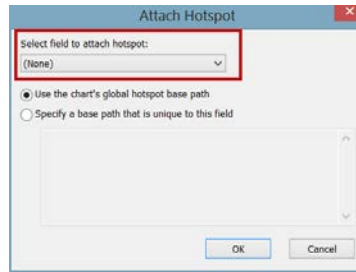


Figure 3.

- Select **Use the chart's global hotspot base path** if all hotspots contain the same global path. Select **Specify a base path that is unique to this field** if each hotspot has a unique path.

Type the path. For example:

//servername/companydocuments/

or

http://www.companysite.com/companydocuments

Note: We recommend that you do not use mapped drive letters.

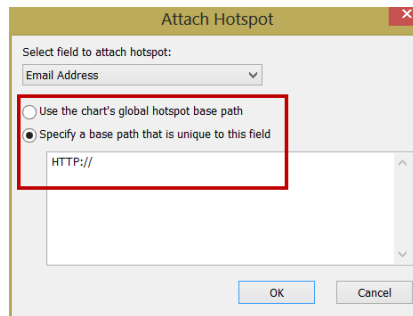


Figure 4.

Click **OK** to close the dialog.

- Tab to the **Assigned To** column field and click. The *Update Assigned Custom Fields* dialog opens.
- Select the **Position type** to use this hotspot or select **All Position Types** and, if applicable, select the field to display the hotspot.

You can expand the position type and fields by clicking the plus sign to the left of the record.

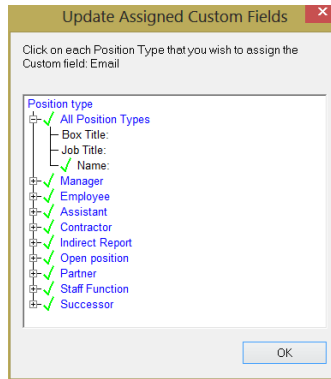


Figure 5.

Click **OK** to close the dialog.

Testing the Hotspot

In **Build Mode**, , the chart displays both the hotspot label and data.

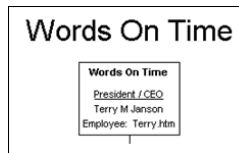



Figure 6.

Note: If your chart is **.odb** or **.odbx** file type and you select **Build Mode**, the connection to your data source ends. View detailed information in the Bringing in the Data document.

In **View Mode**, , and the published chart, your hotspot is active.

- Click the active field in the chart box to test the hotspot link.

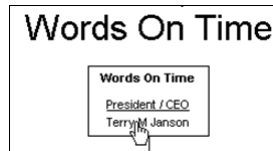


Figure 7.

Setting a Global Hotspot

If all hotspots contain the same path, you can set a global base path that is applied to all hotspots. When attached the hotspot, you don't type the path in the [Attach Hotspot](#) dialog.

1. Select **Edit** from the main menu then **Define** from the pull-down list. The *Define* dialog opens.
2. Select the **Hotspots** tab.
3. Type the base URL in the **Base Hotspot URL or Path name** field. For example:
//servername/companydocuments/

or

http://www.companysite.com/companydocuments/

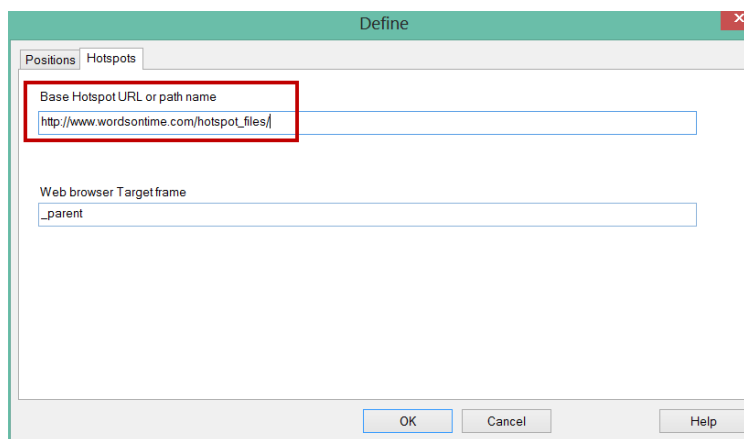


Figure 8.

Note: We recommend that you do not use mapped drive letters.

4. Use **_parent** in the **Web browser Target frame** field if you do not use frames so the hotspot information doesn't launch another occurrence of the web browser.
5. Click **OK** to close the dialog.

Note: OrgPublisher stores one base URL per chart in the *Define* dialog of the *Hotspot Wizard*.

Smart Links

Smart links provide access to multiple hotspots assigned to a single field. End users can navigate to/access multiple applications or web pages from within a chart, leveraging existing intranet applications. Smart links allow drilling down into details about people, jobs, and departments.

Using Smart Links

1. Create two hotspots and assign both to the same data field.
2. Publish the chart and then open it.
3. Click on the field with multiple hotspots. The Smart Links list appears.

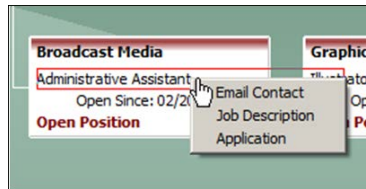


Figure 9.

4. Select an option to open that page or application.